



# North Downtown Mobility Action Program (NODO MAP)

*Investments around North Downtown and the New Arena at Seattle Center*

# SDOT Vision, Mission, and Core Values

**Vision:** Seattle is a thriving equitable community powered by dependable transportation

**Mission:** to deliver a transportation system that provides safe and affordable access to places and opportunities

Committed to **6 core values:**

- Equity
- Safety
- Mobility
- Sustainability
- Livability
- Excellence

# Presentation / Workshop Overview

1. NODO Mobility Action Plan (MAP) background and initial 10-year investment
2. New Arena at Seattle Center:
  - a. 1<sup>st</sup> Ave N and Queen Anne Ave N
  - b. 2nd Ave / Denny Way intersection
3. 1st Ave / Denny Way to 2nd Ave / Broad St PBL connection
4. Seattle Center to Waterfront NGW and Thomas St Overpass
5. Questions / comments

# Background and Purpose

- Oak View Group (OVG) is required to construct or contribute to transportation projects as part of the SDCI Master Use Permit (MUP) decision
- OVG will contribute \$40 million over 39 years to a City (Arena) Transportation Fund (CATF) at \$1,025,000 per year
- North Downtown Mobility Action Plan (NODO MAP) identified and prioritized the recommended projects to be implemented in the Uptown, South Lake Union, and Belltown neighborhoods



# Project Identification, Screening, Evaluation

## Oct. 2017 to Oct. 2018

- Community engagement for draft NODO Mobility Action Plan
- Existing plans
- Community input
- Arena Transportation and Mobility Subcommittee
- Interagency Working Group
- System needs identified by SDOT
- Went from over 500 project ideas down to 45 Tier 1 projects.



# Recent and Upcoming Transportation Projects in North Downtown



# Arena MUP Decision Projects



# NODO MAP Finalization and Execution Plan Development

## Oct. 2018 to Dec. 2019

- Prioritize Tier 1 projects
  - Assess how projects support guiding principals
  - Apply community input, agency support, system needs
  - Develop planning-level cost estimates for recommended projects
  - Leverage improvements by others
  - Determine schedule of projects based on anticipated new arena opening date (mid-2021) and other projects' schedules
- Refine project scope, assume project delivery method, identify team members, refine schedule and cost
- Confirm use of funding sources and partnerships to contribute to projects
- Final of [NODO Mobility Action Plan](#) (December 2019)



# NODO MAP 10-Year Investment/Priority Projects



## NODO MAP 10-YEAR INVESTMENTS

- A** 1st Ave N and Queen Anne Ave N Complete Streets (e.g., transit-only lanes, transit queue jump, signal upgrades)
- B** 1st Ave and Broad St Complete Street Extension (e.g., protected bike lanes, pedestrian crossing, signal upgrades)
- C-west** Thomas Street Greenway: Seattle Center to Waterfront Greenway
- C-east** Thomas Street Greenway: Protected Intersection at Dexter Ave N and Thomas St
- D** Pedestrian Improvements in Belltown
- E** Monorail Improvements Seed-Funding
- F** SR 99 to Waterfront Access and Mobility
- G** Denny Way Corridor East Operational Improvements
- H** Harrison St Corridor Operational Improvements

- Area-wide project (not mapped)*
- I** Neighborhood Programmatic Improvements (e.g., pedestrian improvements, wayfinding, striping, pedestrian-scale lighting, education programs)

## RELATED PROJECTS/PROGRAMS

- █ Thomas Street Redefined (5th Ave N to Dexter Ave N)

# NODO MAP Priority Projects

Project	Year											
	2018	2019	2020	2021	2022	2023	2024	2025	2026	2027	2028	2029
→ A: 1st Ave N and Queen Anne Ave N Complete Streets		Orange	Blue	Green								
→ B: 1st Ave and Broad St Complete Street Extension into Belltown		Orange	Blue	Green								
C-East: Thomas Street Greenway: Thomas/Dexter Protected Intersection		Orange	Blue	Green								
→ C-West: Thomas Street Neighborhood Greenway: Seattle Center to Waterfront		Orange	Blue	Green								
D: Pedestrian improvements in Belltown (1st Ave and Battery St signal)							Orange	Blue	Green			
E: Monorail Improvements Seed-Funding			Yellow									
F: Denny Way Corridor Signals <sup>+</sup>	Orange	Blue	Blue	Green								
G: Harrison St Corridor Signals <sup>+</sup>				Orange	Blue	Green						
H: SR 99 to Waterfront Access and Mobility (Broad St) Signals <sup>+</sup>			Orange	Blue	Green							
I: Neighborhood Programmatic Improvements				Orange	Blue	Green	Green	Green	Green	Green	Green	Green
			Planning	Design		Construction			Seed Funding			

# New Arena at Seattle Center: 1<sup>st</sup> Ave N and Queen Anne Ave N

- Redesign 1st Ave N and Queen Anne Ave N
  - Transit-only lanes
  - Transit queue jump
  - Two new signals
  - Curb bulbs
  - Widen crosswalks
  - 2-way PBLs
- Ensure mobility and safety
  - Adaptive signal system

CORNER OF 1ST AVE N & THOMAS ST LOOKING NORTH - PROPOSED



# New Arena at Seattle Center: 2nd Ave / Denny Way Intersection

- Need to accommodate two 10' southbound travel lanes along 2<sup>nd</sup> Ave south of Denny Way
- Discuss/workshop 2-way PBL placement separated space for pedestrians at intersection
- Existing channelization and right-of-way shown



# 2nd Ave / Denny Way Intersection - Looking South



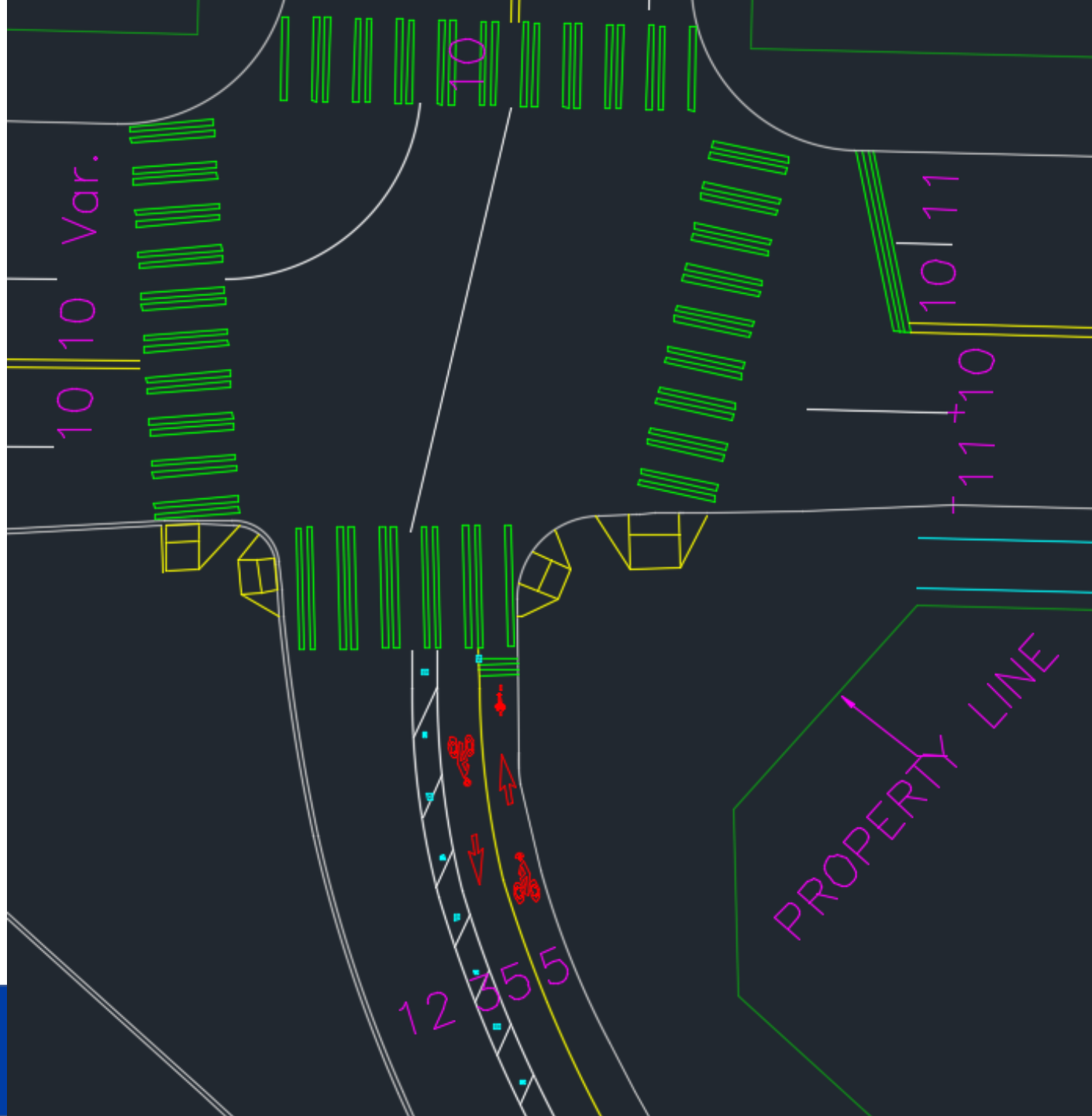
# 2nd Ave / Denny Way Intersection - Looking North



Street Tree (TYP)

Denny Way

2nd Ave



# 1st Ave / Denny Way to 2nd Ave / Broad St Existing Conditions

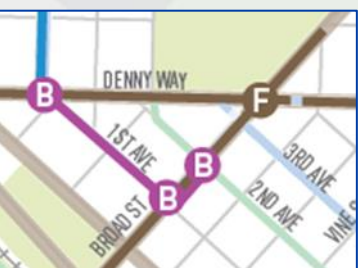
Per Key Arena Master Use Permit (MUP), a two-way PBL will come down the West side of 1st Ave N to Denny Way

High volume of vehicles (~150/hr) making WB to SB turn onto Warren Pl and connecting to 1st Ave

Western curb space = paid parking

Eastern curb space = Bus Only lane or paid parking

Northern curb space = Bus Only lane or paid parking





# 1st Ave / Denny Way to 2nd Ave / Broad St Proposed PBL Connection

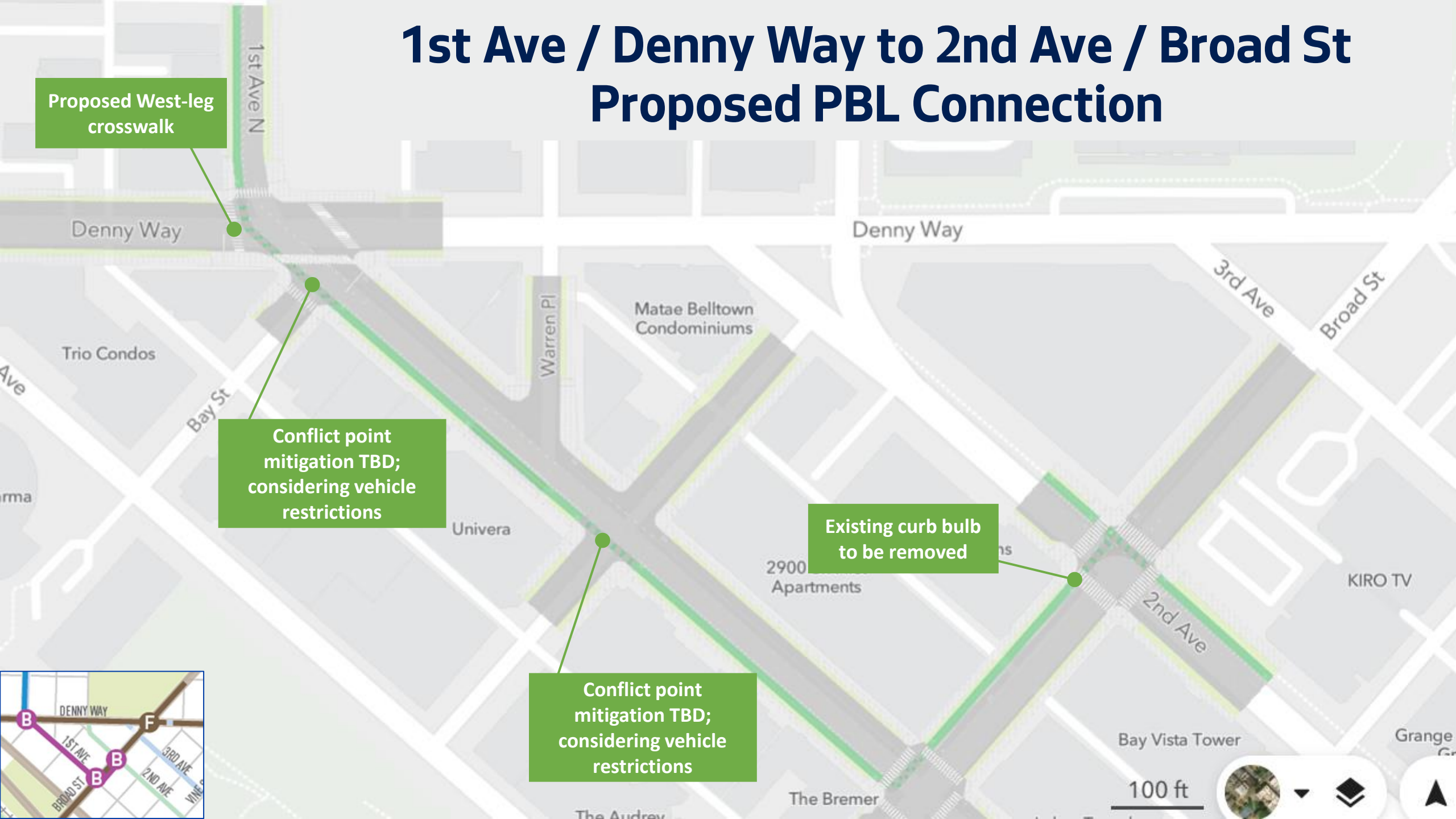
Proposed West-leg  
crosswalk

Denny Way

Conflict point  
mitigation TBD;  
considering vehicle  
restrictions

Existing curb bulb  
to be removed

Conflict point  
mitigation TBD;  
considering vehicle  
restrictions



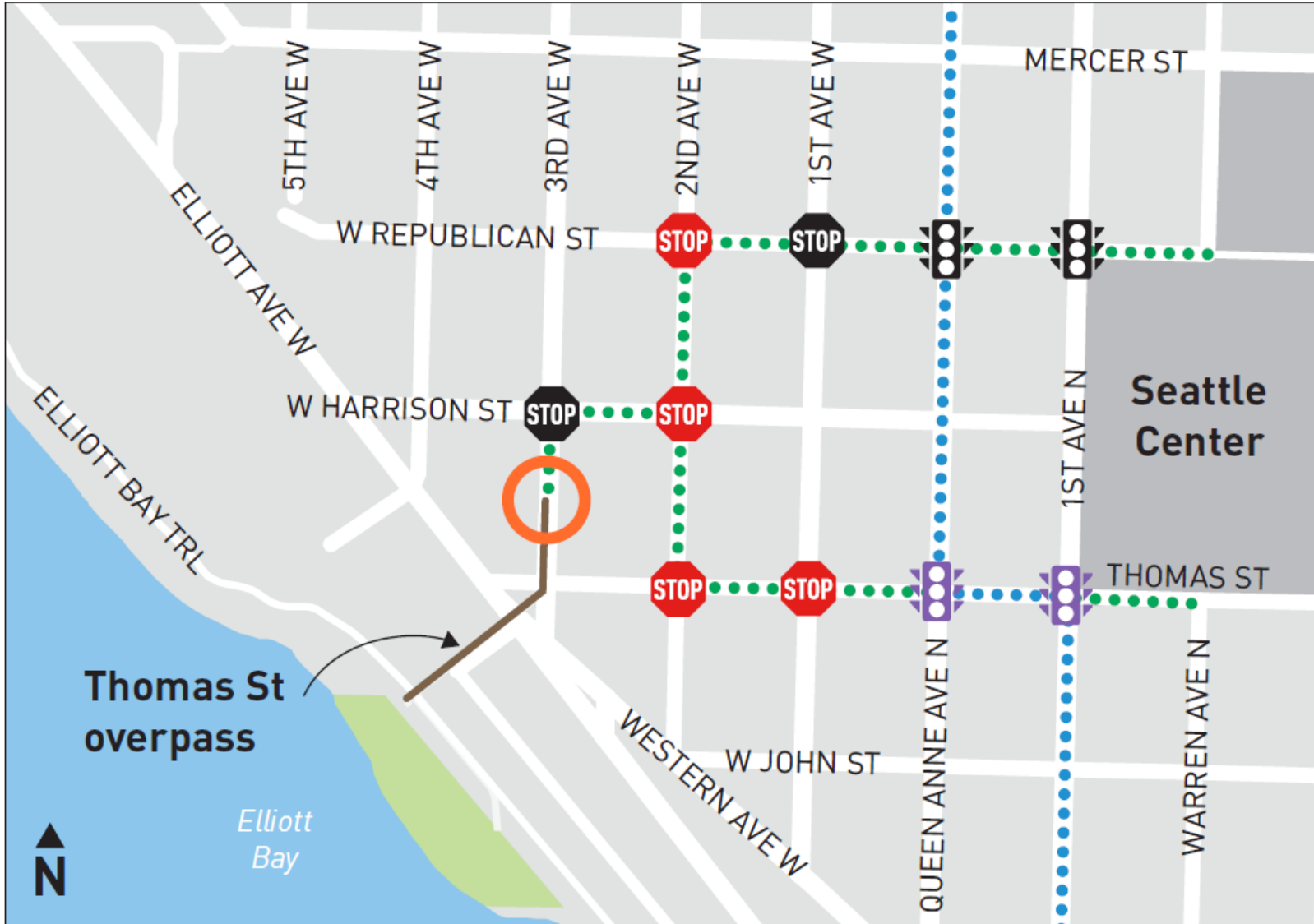
# Neighborhood Greenways

- Neighborhood streets
  - Low vehicle traffic (<1,500 per day)
  - Low vehicle speed (<20mph)
- Prioritize people walking and biking
  - Safer crossings of busy streets
  - Stop signs on intersecting streets
- Wayfinding
  - Connect to priority destinations
  - Connect to the citywide walking and biking network



Photo Credit: Charina Pitzel

# Thomas St Overpass and Seattle Center to Waterfront NGW



## SEATTLE CENTER TO WATERFRONT NEIGHBORHOOD GREENWAY

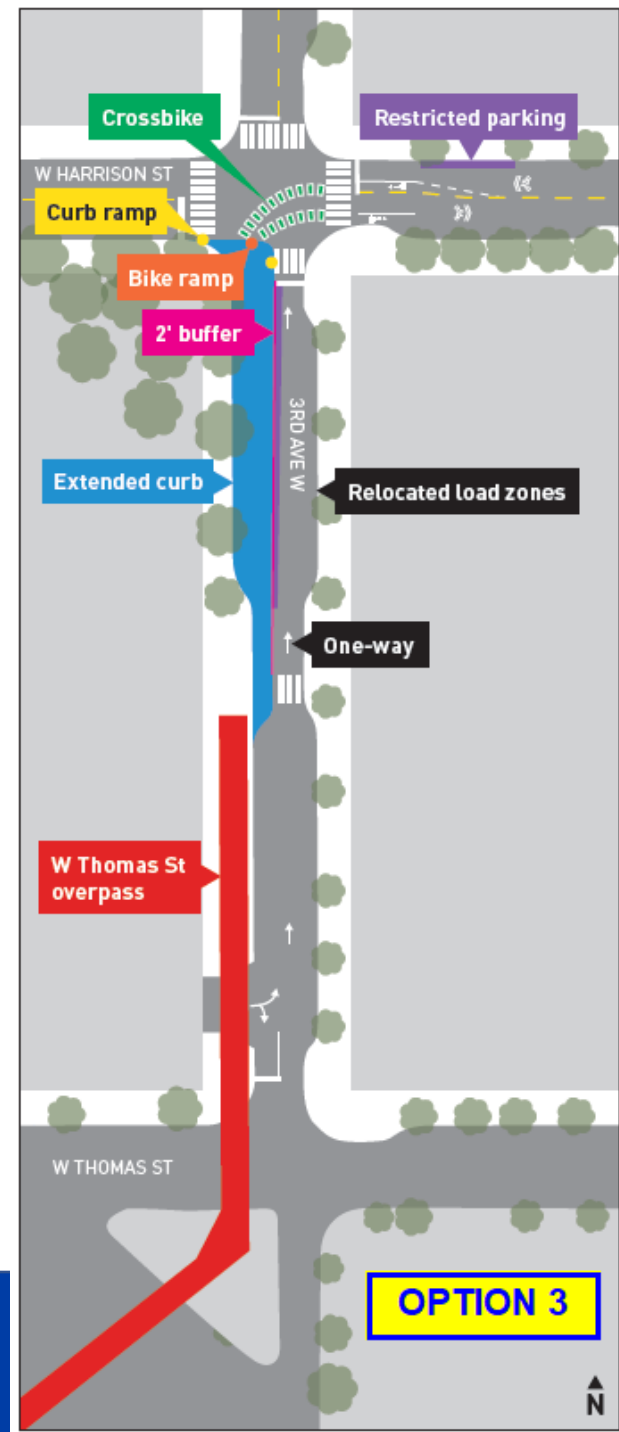
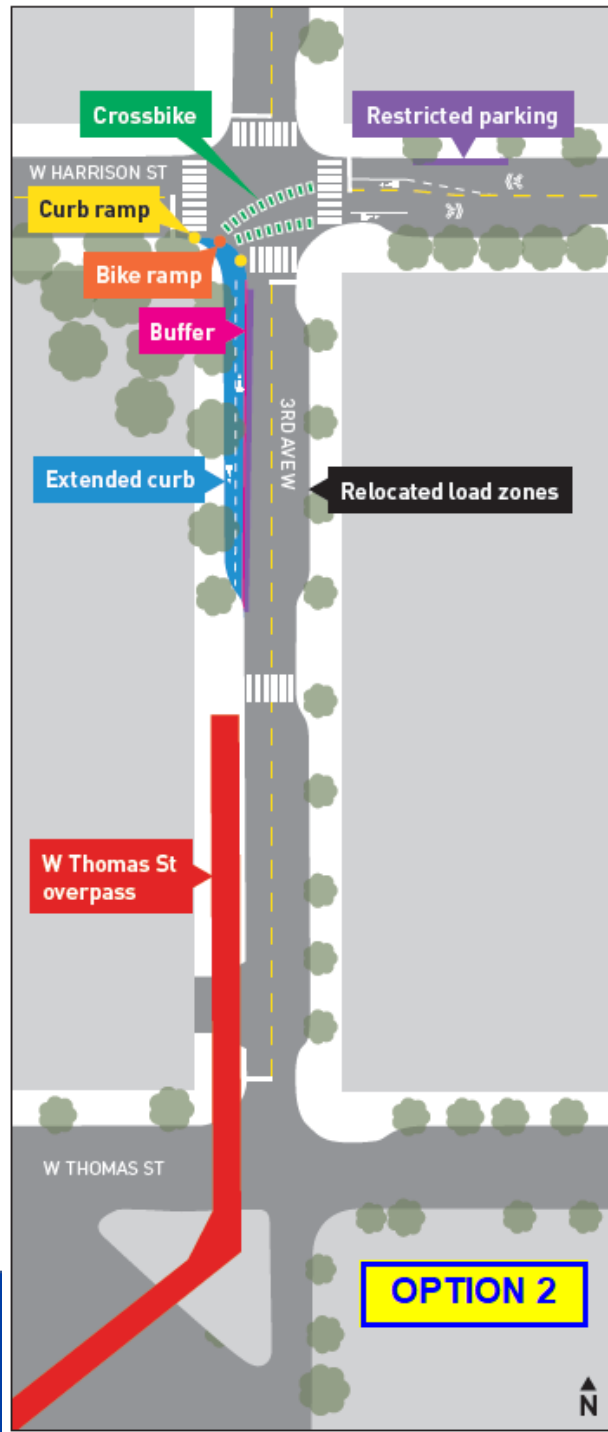
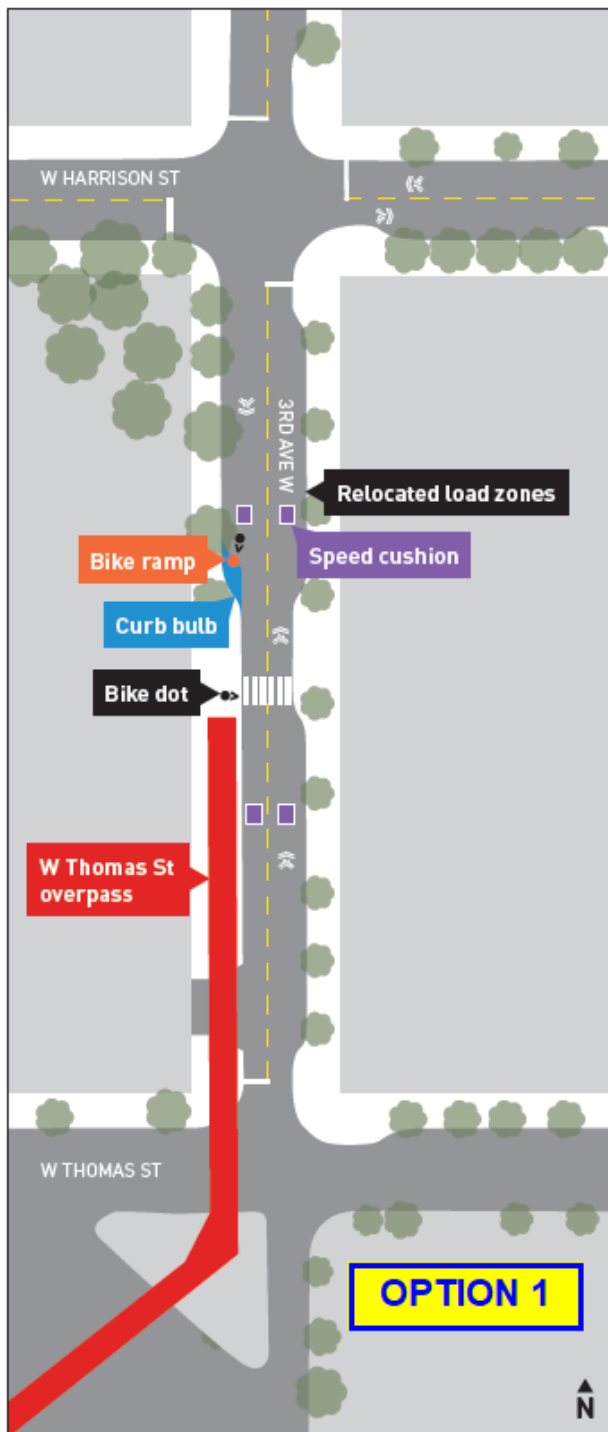
### Proposed Scope

- Planned Neighborhood Greenway (target year 2021)
- Planned bike lanes (target year 2021 - by others)
- 🚦 Signal upgrades (by others)
- 🚦 New signals (by others)
- STOP Retained existing all-way stop
- STOP New all-way stop
- 🟠 Improved civil connection to the Thomas St Overpass

# Thomas St Overpass and Seattle Center to Waterfront NGW

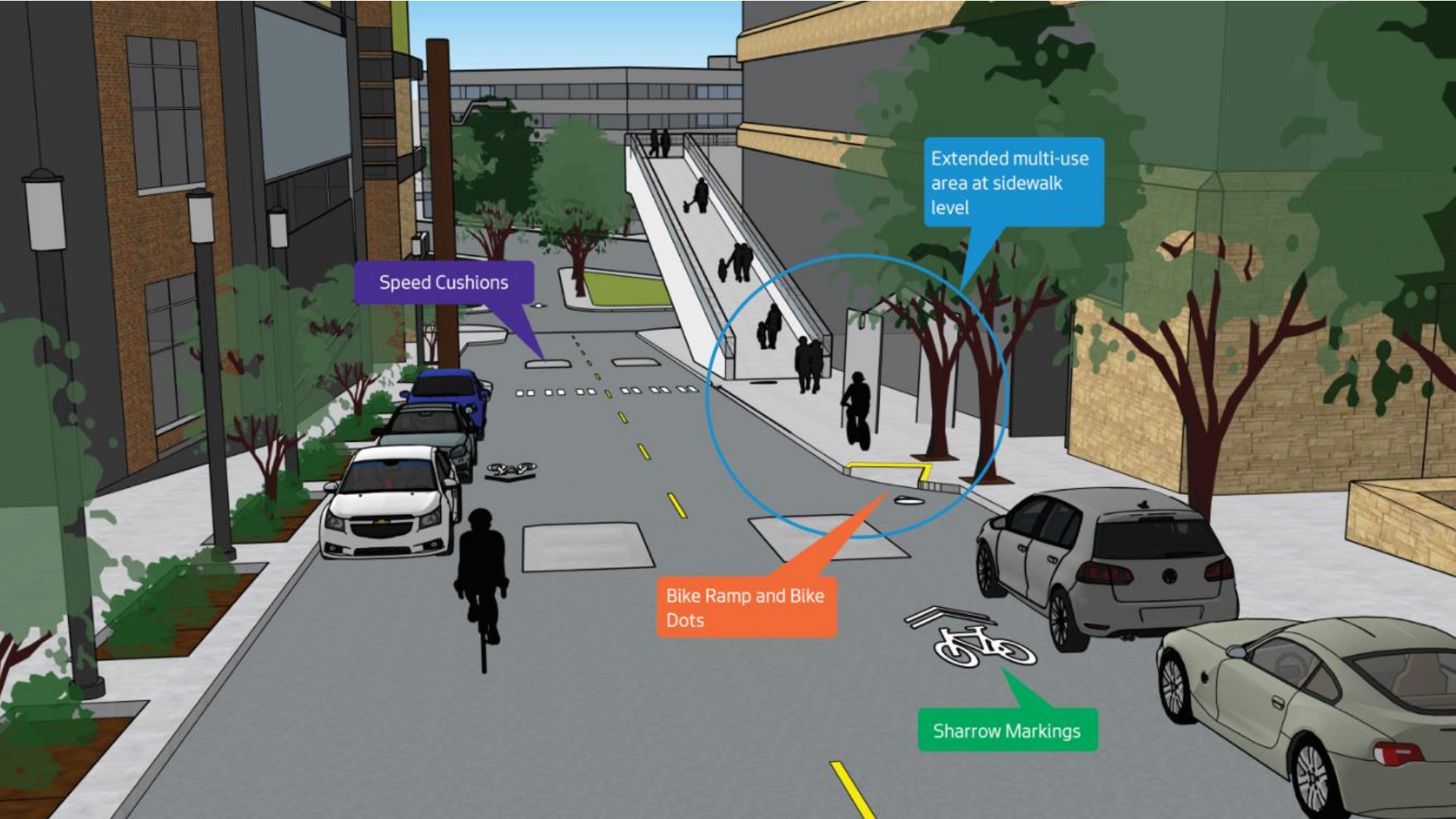


# NGW Connection to Thomas St Overpass Options



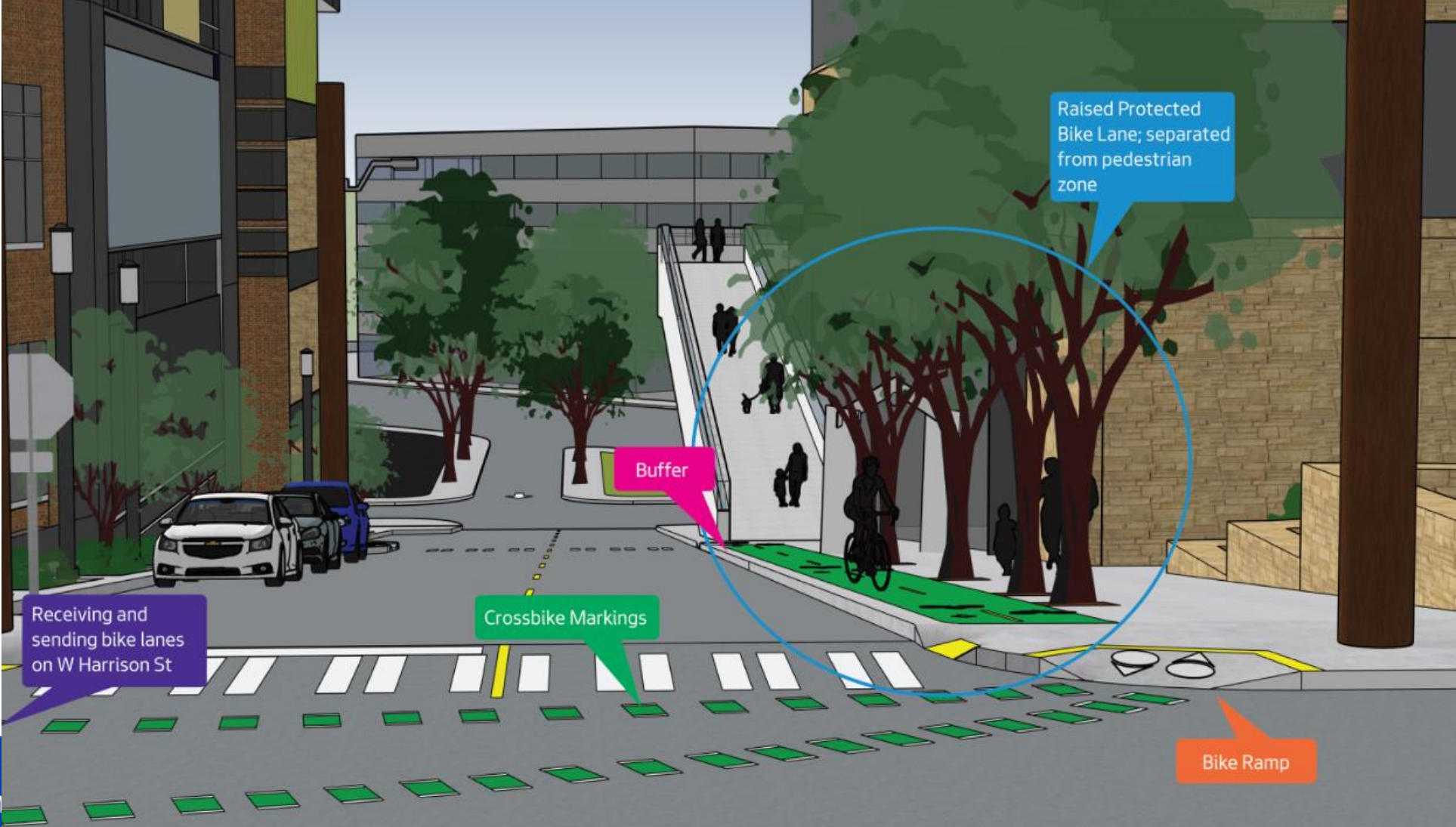
# Thomas St Overpass and Seattle Center to Waterfront NGW - Option 1

An extended multi-use area at sidewalk level that would extend approximately 20 feet north of the existing curb bulb by the Thomas St Overpass entrance.



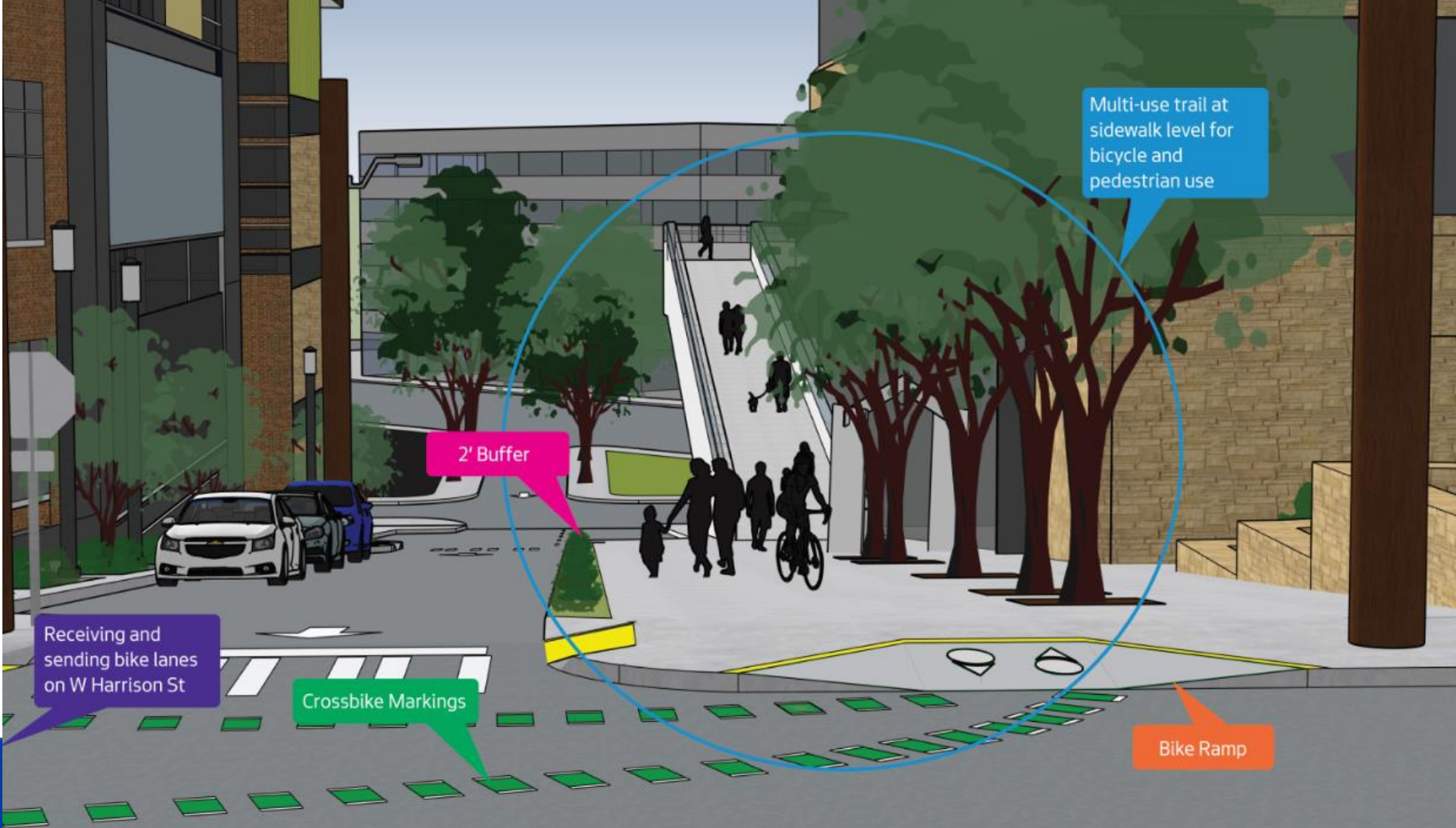
# Thomas St Overpass and Seattle Center to Waterfront NGW - Option 2

A raised protected bike lane and pedestrian sidewalk that would extend from the existing curb bulb by the Thomas St Overpass entrance to the 3rd Ave W and W Harrison St intersection.



# Thomas St Overpass and Seattle Center to Waterfront NGW - Option 3

A multi-use trail at sidewalk level that would extend from the existing curb bulb by the Thomas St Overpass entrance to the 3rd Ave W and W Harrison St intersection, expanding the trail to the current center line of 3rd Ave W. This option would turn the majority of 3rd Ave W into a one-way street between W Thomas St and W Harrison St.





# Thomas St Overpass and Seattle Center to Waterfront NGW - Opportunity for Input

- Online survey – now to 2/26/20
- Drop-in session – 2/19/20
  - 4 – 6 PM (drop in anytime)
  - Elliott Bay Office Park
  - 300 Elliott Ave W
  - Follow signage to room
- Details: <https://www.seattle.gov/transportation/projects-and-programs/programs/greenways-program/seattle-center-to-waterfront-greenway>

# Websites

- **NODO MAP**

- *<https://www.seattle.gov/transportation/NODOMAP>*

- **Seattle Center to Waterfront NGW**

- *<https://www.seattle.gov/transportation/projects-and-programs/programs/greenways-program/seattle-center-to-waterfront-greenway>*



**Comments/Questions?**